

2.4 Extraction of Elevation Profile using SRTM or ASTER DEM

2.4.1 Stepwise Process Flow Details

- Step 1: Install the SRTM Downloader Plugin
 - o Open QGIS.
 - o Go to the Plugins menu.
 - o Select "Manage and Install Plugins."
 - o In the Plugins dialog, search for "SRTM Downloader."
 - o Click on the plugin and then click the "Install Plugin" button to install.
- Step 2: Access the SRTM Downloader Plugin
 - o Once the plugin is installed, you should see a new menu item called "SRTM Downloader" in the QGIS toolbar.
- Step 3: Define Study Area
 - o Zoom in to your study area in QGIS using the zoom and pan tools.
 - o Use the rectangle or polygon selection tool to define the area you want to download the SRTM data for. You can find these selection tools in the QGIS toolbar.
- Step 4: Run the SRTM Downloader Plugin
 - o Click on the "SRTM Downloader" menu in the QGIS toolbar.
 - o Login using the Earthdata user account.
 - o In the SRTM Downloader dialog, choose the output folder where you want to save the downloaded data.
- Step 5: Start the Download
 - o Click the "OK" button to start the download process. The plugin will automatically download the SRTM data for the defined study area.
- Step 6: Process the Downloaded Data
 - o Once the download is complete, the SRTM data will be available in the output folder you specified.
 - o You can now use the downloaded SRTM data for your analysis in QGIS.

2.4.2 Output Illustrations

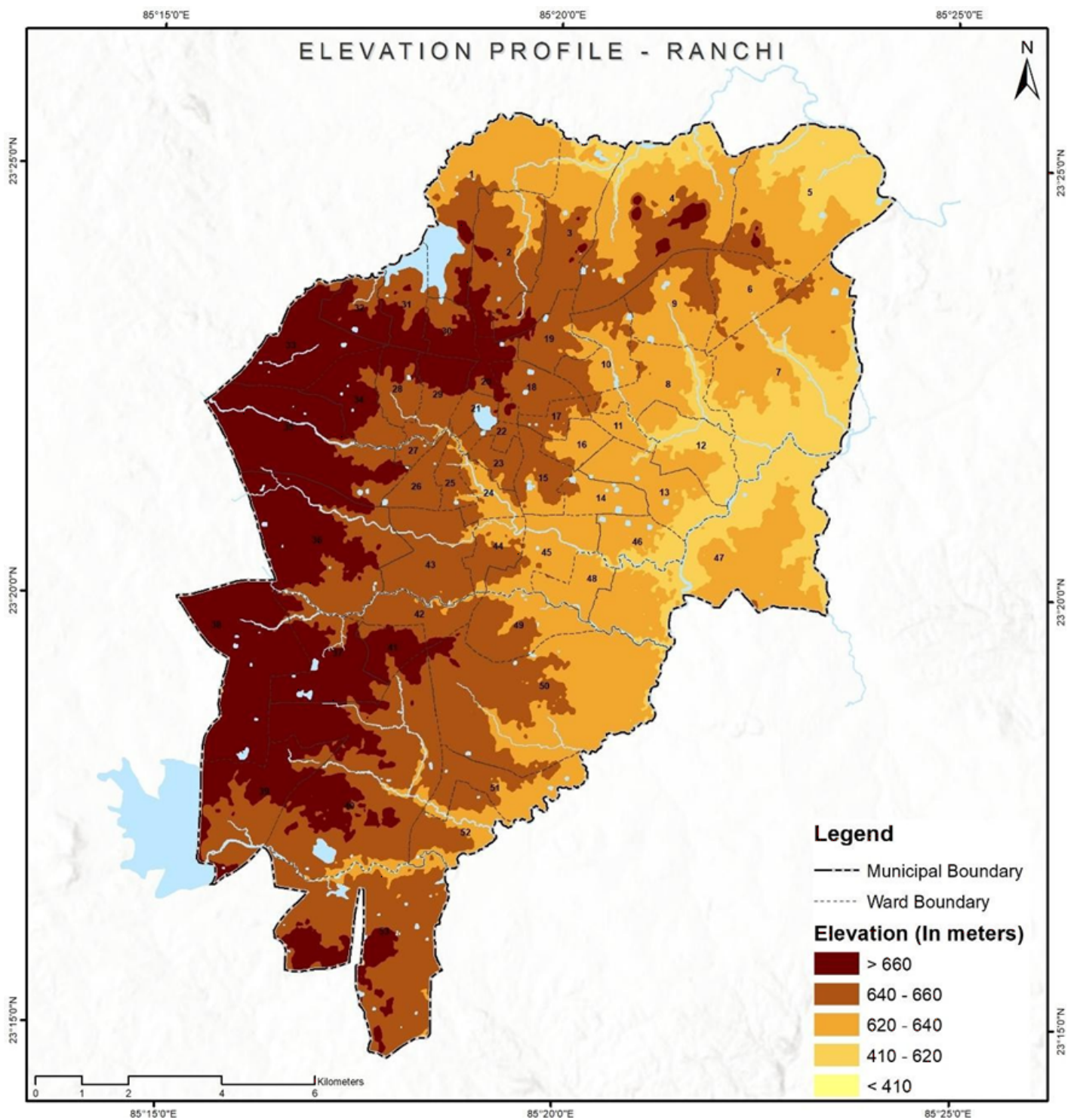


Figure 6 Illustrations of extracted elevation profile, Ranchi (India)
Source - CWIS spatial analysis, Inn pact Solutions and GWSC

Revision #1

Created 3 March 2025 04:16:30 by Bookstack Editor

Updated 3 March 2025 04:17:00 by Bookstack Editor