

3.8 Assessments for Public Toilet Gap and Required Upgrades

3.8.1 Data Requirements

1. Major commercial and institutional land uses
2. Network Dataset using the road network layer
3. Location of public toilets with number of seats

3.8.2 Stepwise Process Flow Details

- Step 1: Assess the Walkability Factor

For this process, a network analysis of the study region is necessary. This involves the creation of a network dataset.

- Step 2: Create a Network Dataset

The road network shapefile must be clean and free from any topology errors. After ensuring the integrity of the shapefile, create a network dataset.

- o Ensure you have the "QNEAT3" plugin installed in your QGIS.
- o Load your road network shapefile in QGIS.
- o Use the "QNEAT3 > Create Network from Layer" tool to create a network dataset.

This will initiate the creation of a network dataset using the road layer.

- Step 3: Conduct a Proximity Study

Use the "QNEAT3 > Service Area (from Layer)" tool to conduct a proximity study using the locations of existing public toilets as input data.

- Step 4: Create a Network Buffer

For each public toilet, create a network buffer representing a walkability distance of 500 feet.

- Step 5: Overlay the Data with Commercial Land Use

Use the "Vector > Geoprocessing Tools > Intersect" tool to overlay the buffer data with the commercial land use data. This will help you identify major commercial areas and public places outside the walkability region of the public toilets.

- Step 6: Identify New Toilet Locations

Based on the overlay analysis, pinpoint potential locations for new toilets. These should be in areas currently underserved by the existing public toilets, particularly in commercial and high traffic

areas.

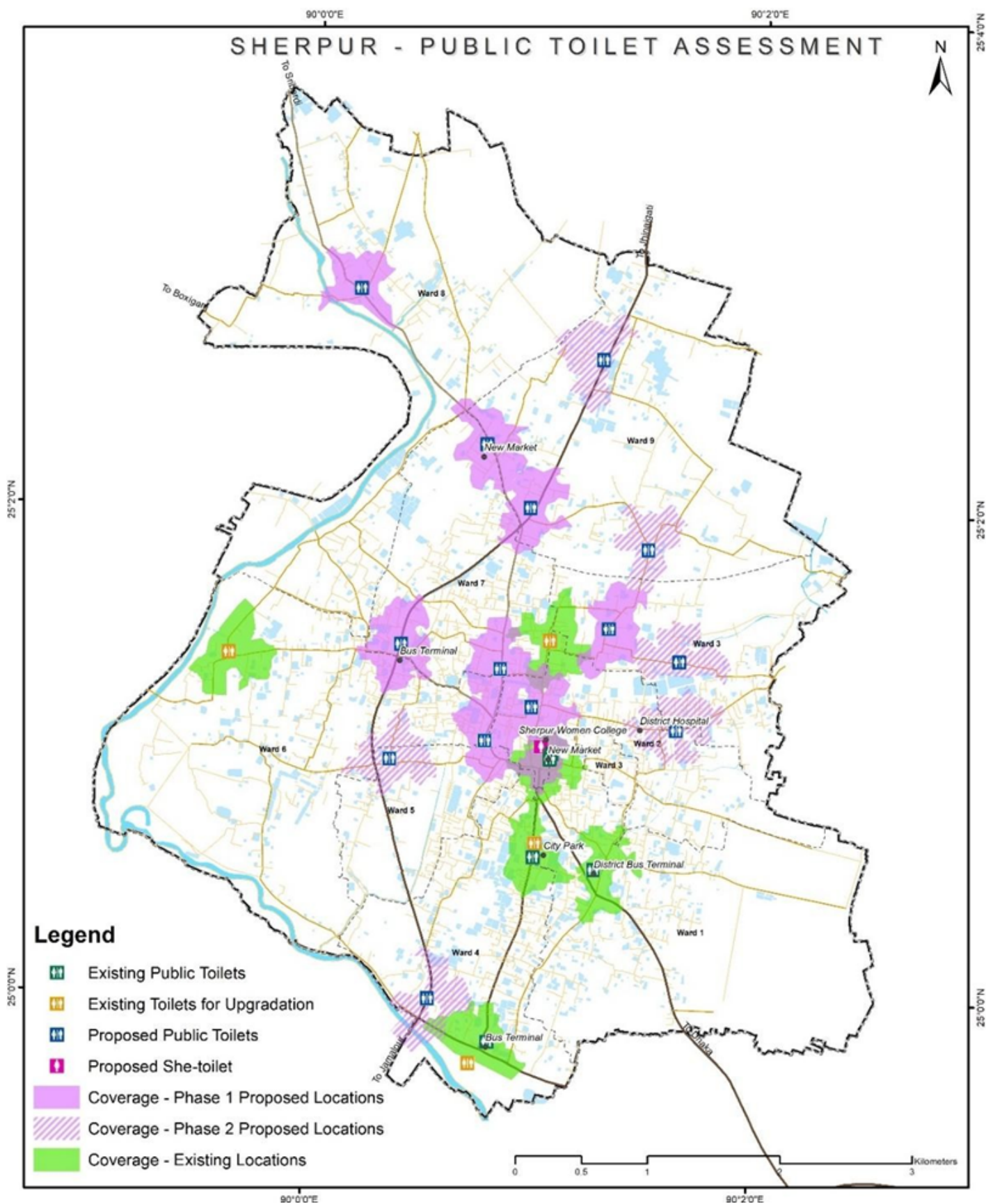


Figure 14 Illustrations of public toilet assessment of Sherpur, Bangladesh
Source – CWIS spatial analysis, Innpact Solutions and GWSC

3.8.3 Output Application

Implementing and adapting these recommendations would contribute to an adequate distribution and coverage of public toilet services throughout the city. A primary focus is on achieving a balanced gender distribution of water closets (WCs). Common observations across various cities have revealed a significant shortage of women's facilities in public toilet premises. Therefore, alongside general upgrades, there is a proposal to establish dedicated 'She Toilets' in high footfall areas to meet this demand.

Revision #1

Created 3 March 2025 04:21:21 by Bookstack Editor

Updated 3 March 2025 04:21:51 by Bookstack Editor